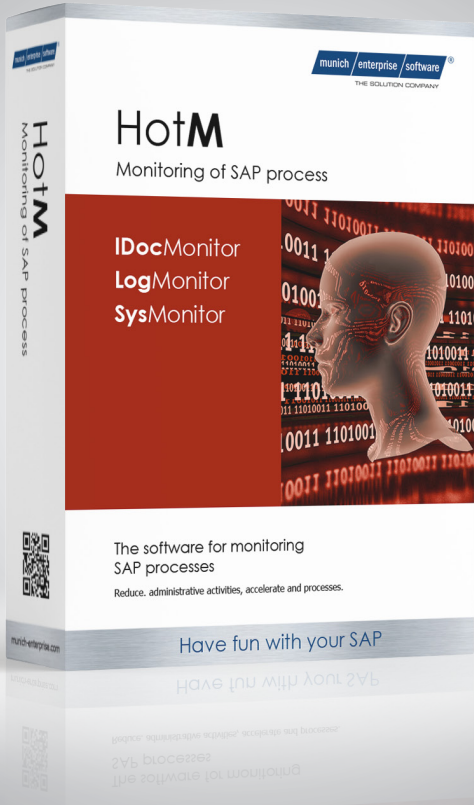


# HotM

The software for monitoring  
SAP processes

07/2018



Monitor your processes - safe, easy and efficient

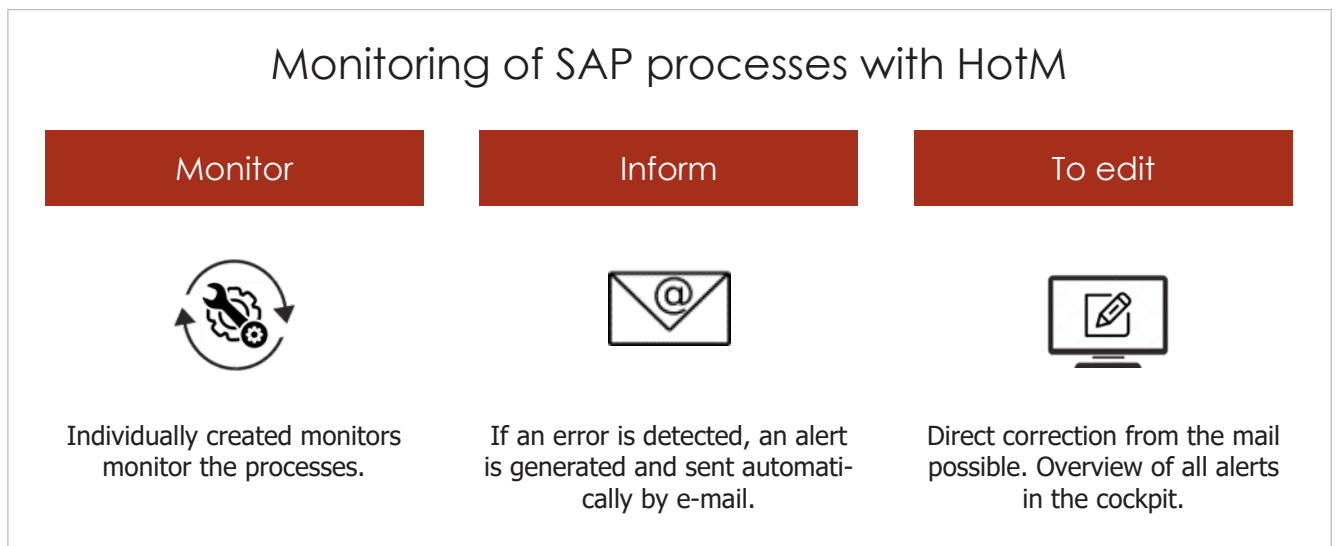
# Product description

**HotM** supports the user in the monitoring, processing and administration of SAP processes in the areas of IDoc, application log and runtime environment.

Background: In practice, many companies spend valuable time identifying and correcting errors in business processes and system states.

With the SAP add-on HotM, you always know whether SAP processes and the SAP system are running error-free. The HotM Cockpit can be used to easily define process monitoring monitors. These monitors contain a content and technical set of rules for periodic monitoring. Defined system states are recognized immediately. Subsequently, the responsible users are informed automatically by means of a so-called alert by email. In order to speed up the error correction, you can jump from the email into the corresponding SAP applications. The rules for the state detection and distribution of messages are defined according to individual requirements.

With timely error detection, HotM helps you reduce delays in your business processes. Faulty system states are detected promptly and can be corrected immediately.



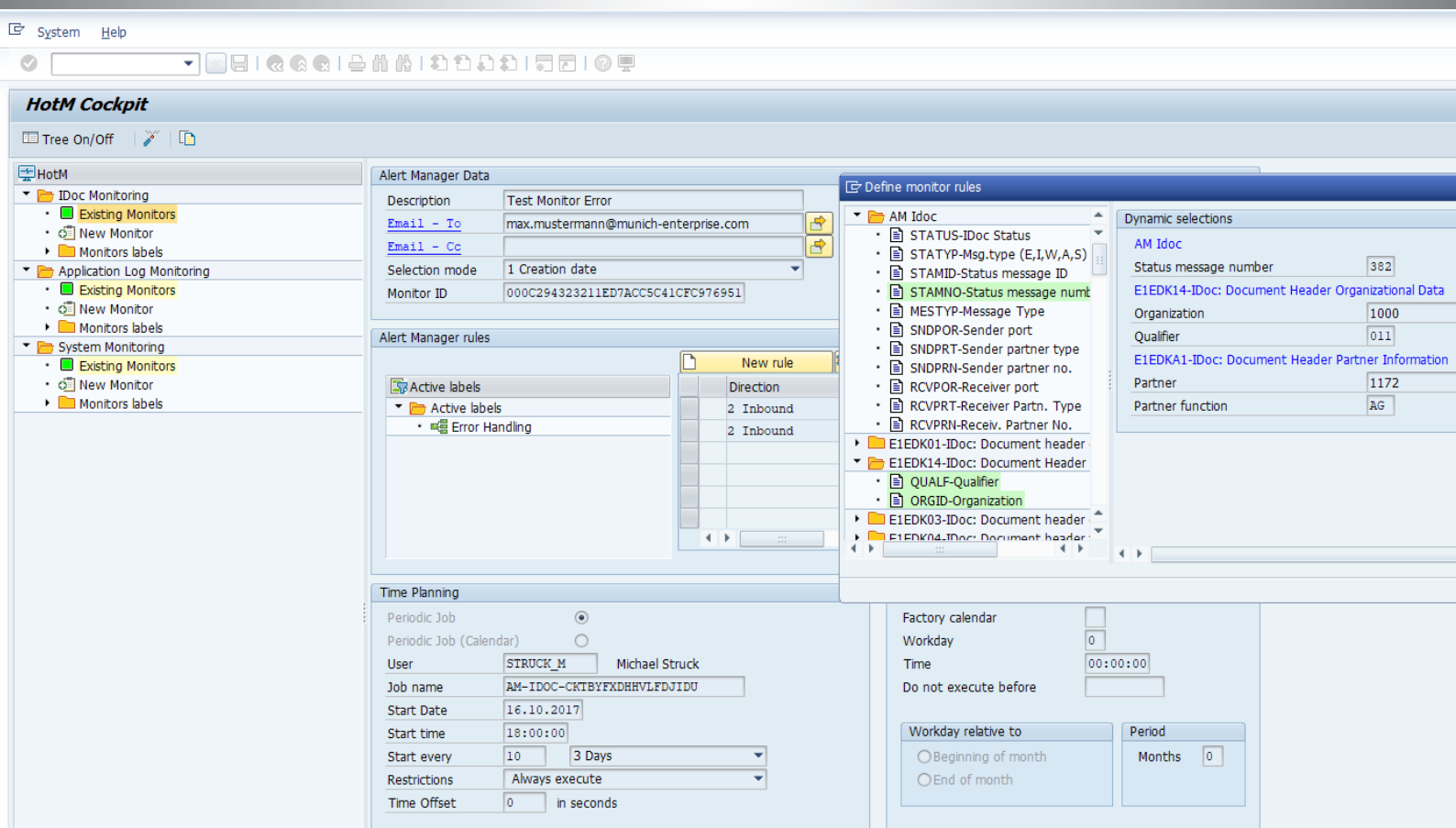
## Function overview

Define monitors to monitor the system.

Components:

- IDoc**Monitor for monitoring IDoc output and input
- Log**Monitor for monitoring the application log
- System**Monitor for monitoring the ABAP runtime environment

- Periodic monitors for generating alerts
- Maintenance of rules with technical and content criteria
- Test tool for the rules
- Definition of email distributors
- Email notification of „faulty“ system states
- Flexible design of the email via HTML
- Timely detection of technical and content error situations
- Direct jump from the e-mail to the SAP application for accelerated error correction



## Customer benefits



### Benefits for the company

- Shortening and reducing disruption times in SAP processes
- Increased productivity through fast, smooth processes
- Cost, resource and time savings
- Fast ROI and lasting cost reduction
- Competitive advantage through frictionless communication channels
- Increase customer satisfaction



### Benefits for the users

- Reduction of monitoring times by active notification via e-mail
- Fast fault identification
- Efficient transaction processing (error transparency, direct processing, forwarding)
- Simple, user-friendly handling
- Central user interface (cockpit)
- Complete control of SAP processes according to individual rules



### Benefits for the IT

- Easy implementation and short introduction time (ready-to-run)
- Modification-free and release-capable
- No further hardware / server necessary
- Easy administration
- Increased user satisfaction

## Scope

The add-on is offered as a standard solution. The application is available in German and English.

You can download the software via our portal. Afterwards, you import these into your SAP system. Thereafter, the product is ready for use immediately. You do not need any other software and service components.

The so-called monitors, with which you determine the important technical and content regulations for you, you can define yourself by means of a detailed user documentation.

## Services

- Portal access for software download
- Transports with relevant software components
- User documentation
- Support Hotline

## Technical specifications

- Base - NetWeaver Application Server 7.00 (ABAP)
- Developed with ABAP and integrated extension ABAP Objects
- S/4 HANA suitable

## Contact

Would you like more information about our SAP add-on „HotM“? Talk to us.

We are happy to be at your disposal for a comprehensive discussion and a product demo.



+49 (0)89 2154 689 80



[info@munich-enterprise.com](mailto:info@munich-enterprise.com)

Have fun with your SAP®

munich enterprise software GmbH  
Industriestraße 29  
82194 Gröbenzell

+49 (0)89 2154 689 80  
[info@munich-enterprise.com](mailto:info@munich-enterprise.com)  
[www.munich-enterprise.com](http://www.munich-enterprise.com)

